



**ESG**  
Signals®  
by **RS** Metrics

**Cognizant**

# Environmental, Climate, and Physical Risk Data for the Forestry Industry

Product Overview

# RS Metrics and Cognizant - ESGSignals® Solution for the Forestry Industry

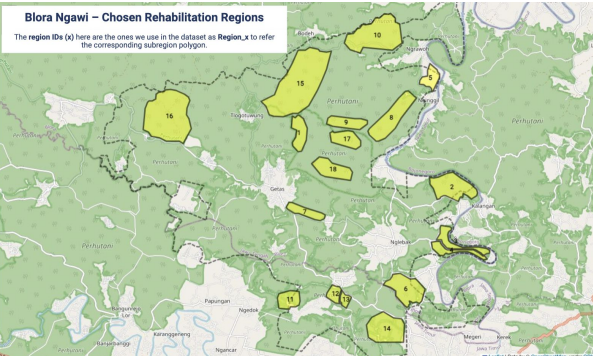
Founded in 2010, RS Metrics is a pioneer in providing high-quality geospatial data, with innovative products including LumberSignals and TrafficSignals. Our core sustainability product, ESGSignals®, provides independent environmental, climate, and physical risk data for regulatory disclosure and strategic management of company assets. We have partnered with Cognizant to deliver an [ESGSignals®-powered](#) solution for companies in the forestry industry which includes both insights about company assets and data for analysis, compliance, and reporting according to the Regulation on Deforestation-free Products (EUDR) framework.

## Value proposition for forestry companies

ESGSignals® provides valuable data for strategy, management, and adherence to the EUDR disclosure requirements, and Cognizant provides the ability to seamlessly integrate EUDR data collection and analysis into company operations. ESGSignals® can ingest asset locations (required to be collected by EUDR) via API or other methods to generate over 200 environmental, climate and physical risk metrics including deforestation, vegetation, Key Biodiversity Areas, etc. Together with Cognizant, RS Metrics can integrate this capability within the company's current processes. Because ESGSignals® is a one-stop shop for all geospatial climate data, companies from the forestry sector can assess the same asset locations for all climate and physical risks, enabling a full assessment of potential supply disruptions.

## Use Case: Blora - Ngawi, Indonesia Forest Monitoring Project for MAS Holdings

On a recent project, RS Metrics conducted a broad forestry assessment and forest rehabilitation project for MAS Holdings, an apparel manufacturer based in Sri Lanka. Some of the data insights we focused on included: dynamic indicators (monthly average land cover classification, monthly average vegetation index, daily temperature (in K), daily total rainfall), static indicators (Red list species distribution including total number of species, % of extinct in the wild, % of extinct, % of critically endangered, % of endangered, % of vulnerable, % of near threatened, % of least concerned, % of data deficient), historical indicators (summary of forest conditions in the region based on historical data). Explore the Blora-Ngawi Indonesia Forest Monitoring project proposal [here](#).



## Use Case: TNFD Alignment Project for Nippon Steel Corporation

RS Metrics is also a TNFD Catalyst member and has contributed to the building of the organization's new disclosure framework. ESGSignals® can be used to conduct a complete TNFD-aligned LEAP assessment on corporate assets and those of your suppliers. A case study of a recent LEAP assessment with RS Metrics' ESGSignals® is [here](#).

"RS Metrics' use of Google Cloud's AI capabilities to develop cutting-edge solutions can help customers drive digital innovation at scale."

Rodrigo Rocha, Head of Global Apps ISV Partnerships at Google Cloud



San Francisco

Malcolm Harris  
EVP, Corporate Strategy  
and Partnerships  
+1-347-322-0500  
mharris@rsmetrics.com

Asia-Pac

Rashmi Bomiriya  
COO & CDS  
+94-77 229 2471  
rbomiriya@rsmetrics.co  
m

Asia-Pac

Nilosha Pereira  
Global Head of  
Operations  
+94-770-133-756  
nilosha@rsmetrics.com

Indexes - Metrics – Insights  
Satellite Analytics - AI - Machine Learning  
Objective – Realtime - Verified